

Course: PT 601E_ON / Underpainting & Layering in Oils

Instructor: Anthony Ciambella

Days/Dates: 6 weeks, Sunday, June 6 – 27

Time: 10:00 a.m. –12:30 p.m.



All classes will be Zoom sessions with PowerPoints, video demonstrations, and live-feed critiques. Once class begins, a weekly syllabus with images will be supplied.

This course is designed to dispel the misinformation you might have collected over the years, and to familiarize you with the best of traditional and newer materials. Advantages, disadvantages, compatibility, durability, permanence, and various applications will be thoroughly covered. Topics will include paints, brushes, layering, mediums, varnishes, framing, storage, presentation, exhibition strategies, and health risks.

Student Learning Outcomes

Based on the lectures, PowerPoints, demonstrations, homework, and in class assignments, students should be able to distinguish between inferior products and the most positive, stable, and durable materials available on the market today, as well as the wide variety of their traditional and nontraditional applications. Students should be able to discuss:

- Terms related to art and making art.
- The difference between cave, tomb, fresco, tempera, encaustic, oil, acrylic, and resin painting.
- What toxic materials are used by artists - how artists are exposed - risk factors – effects on our bodies - safety measures.
- The difference, advantages and disadvantages of stretcher bars and strainers, linen & cotton, natural wood and engineered wood products, metals, parchment,

paper, Mylar, hide glue, PVA, polymer emulsions, gesso, oil and acrylic grounds, tempera, oil, and acrylic paint and brushes, mediums, varnishes, framing skills, and storage strategies.

- Paintings in the Philadelphia Museum of Art and PAFA Museum, including what can be determined from X-ray, inferred, and ultraviolet photography.

As we will have simple homework assignments, and be painting a lot in class, it would be to your advantage to have several supports. The more underpaintings you have, the more layering techniques you can try. It might be easier to work on several smaller canvases rather than a few larger canvases. I generally recommend this for class:

07008-5810 BLICK CANVAS PANEL 8X10 - 5PK @ \$4.56 PLUS S&H - MAIL ORDER ONLY



Under \$20 for 15 canvases 8x10 each – It took 21 days to ship.

June 6.

PowerPoint showing various underpainting styles and techniques used by artist throughout history. Discussion about supports, paints, brushes, solvents, and mediums available to use in this class. Please have several supports and all the materials you use when oil painting.



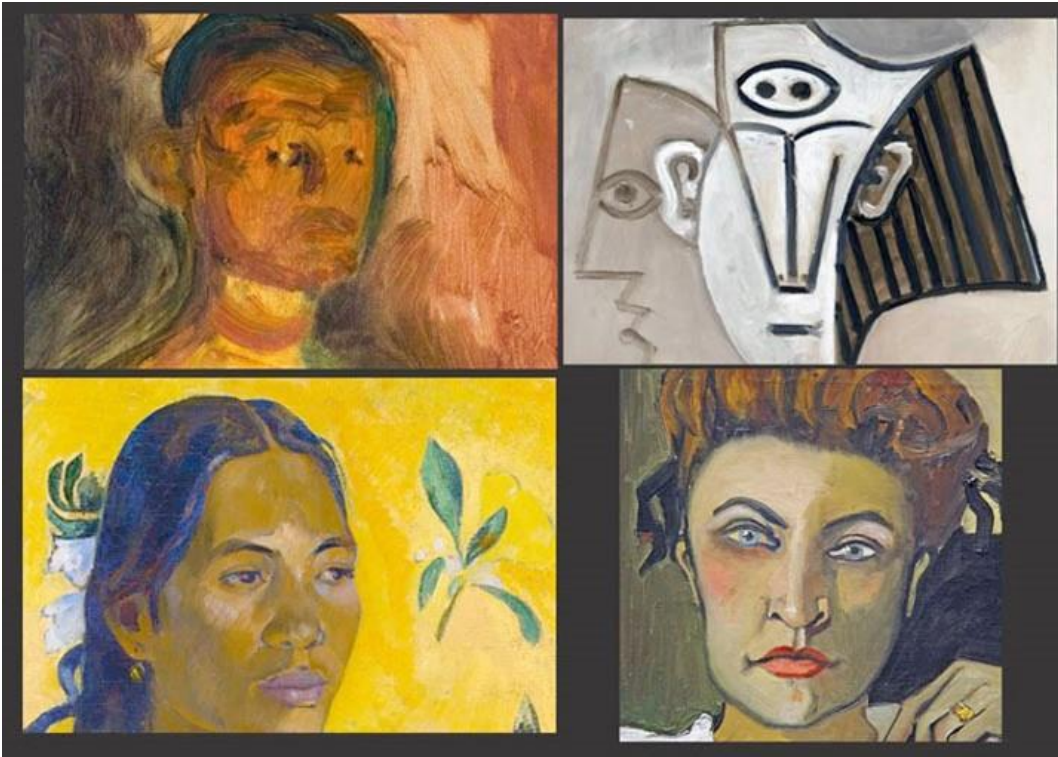
June 13 & 20

PowerPoints on health and safety, and structural problems that occur over time. I will demo layering techniques using a variety of mediums and brushes.



June 27

Correcting and adjusting previous layers and wet-into-wet overpainting. Varnishing, framing, storage, and exhibition strategies.



Questions? ciambella@pobox.pafa.edu

Zoom with Canvas

Thank you for registering for this online course. This course will take place live via Zoom, a free videoconferencing service. You will only need a computer with a high-speed internet connection to participate, as well as a means of photographing your work to upload -- a cell phone camera will suffice. All Zoom meetings take place in Eastern Time.

You will receive instructions* for accessing Zoom videoconferencing sessions in a reminder email two days before the course start date. *Please be sure to check your email junk/spam folder.* We ask that you please take advantage of the Zoom tutorial before the course begins. Basic training sessions for Zoom will be made available at the start of the course as well. Review PAFA's list of [Zoom Technical Requirements](#) for additional information.

* *Please note:* The passcode included in the instructions for entering Zoom sessions is case-sensitive and should include no added punctuation at the end. If you are entering the passcode correctly and it is not being accepted as valid, try clearing your internet browsing history and restarting your device before re-entering it. Students having continued difficulty accessing Zoom due to issues with their device or internet connection, may wish to use an alternate device, such as a smartphone, to enter a particular day's session.

You will also receive an invitation to join *Canvas*, PAFA's online learning management system, on, or shortly before, the course start date. Your username is the email you registered with, and you will need to set up your password. Canvas is the website where the syllabus, assignments, videos, and feedback will be. You can always sign-in to Canvas and find all of the information you need about your class. For Canvas instructions (following acceptance of the emailed invitation to log in), see PAFA's [Canvas FAQs](#).

Please contact us the any questions at continuinged@pafa.edu. For more information and links, please see CE's [Registration Information](https://www.pafa.org/school/academics/continuing-education/registration-information) (<https://www.pafa.org/school/academics/continuing-education/registration-information>).